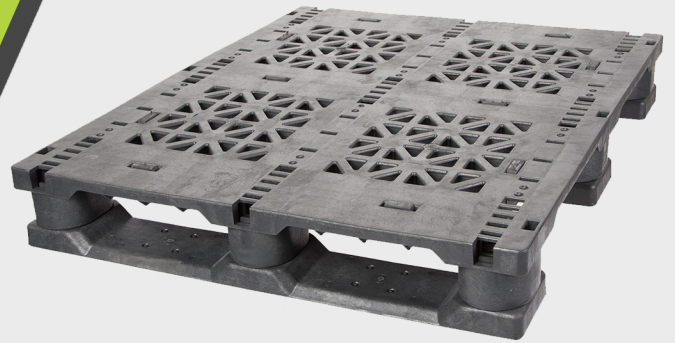




# GREYSTONE



## GS 40" X 32"

### FEATURES & BENEFITS

- 100% RECYCLED PLASTIC (HDPE)
- INJECTION MOLDED
- SANITARY & EASY TO CLEAN
- STRONG & LONG LIFESPAN
- REUSABLE & RECYCLABLE
- IMPACT & WEATHER RESISTANT
- STACKABLE & CONVEYABLE
- 4 WAY ENTRY
- OPTIONAL ROD CONFIGURATIONS



PROTECTS



COST EFFICIENT

SUSTAINABLE



PRODUCT #	GS.4032.3R0	GS.4032.3R3
DESCRIPTION	(3) RUNNER / (0) ROD	(3) RUNNER / (3) ROD
LENGTH (L)	40"	40"
WIDTH (W)	32"	32"
HEIGHT (H)	5.5"	5.5"
WEIGHT	36 lbs.	40 lbs.
STATIC LOAD CAPACITY	30,000 lbs.	30,000 lbs.
DYNAMIC LOAD CAPACITY	5,000 lbs.	5,000 lbs.
RACKING CAPACITY	1,000 lbs.	2,500 lbs.
53' TRAILER QUANTITY	810	810
40' SEA CONTAINER	476	476



GREYSTONE MANUFACTURING  
2601 SHORELINE DRIVE  
BETTENDORF, IA 52722  
WWW.GREYSTONELOGISTICS.COM



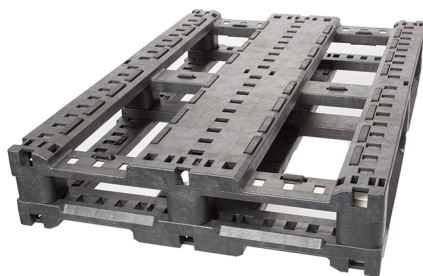
MARILYN CARTER  
GM & INSIDE SALES  
563-332-0052  
MMC@GSTMFG.COM

*Greystone guidelines are established from internal testing and does not constitute any warranty related to each customer's application. All Greystone products are sold with the understanding that the customer will validate for themselves the suitability of the product for their specific application. As each product application is unique, the customer assumes all risks associated with the determination and actual use of the pallet.*



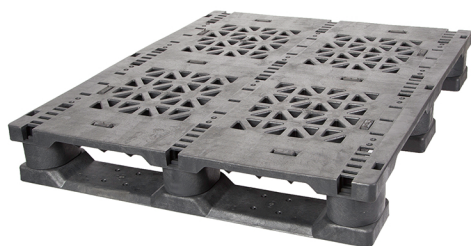
# GREYSTONE

**B  
E  
V  
E  
R  
A  
G  
E**



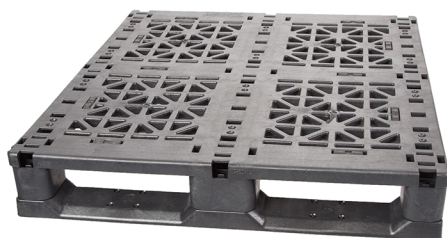
**KEG**

PRODUCT #	GS.4430.KEG.STND
DESCRIPTION	KEG
LENGTH (L)	44"
WIDTH (W)	30"
HEIGHT (H)	7"
WEIGHT	51 lbs.
STATIC LOAD CAPACITY	30,000 lbs.
DYNAMIC LOAD CAPACITY	4,000 lbs.
RACKING CAPACITY	N/A
53' TRAILER QUANTITY	630
40' SEA CONTAINER	390



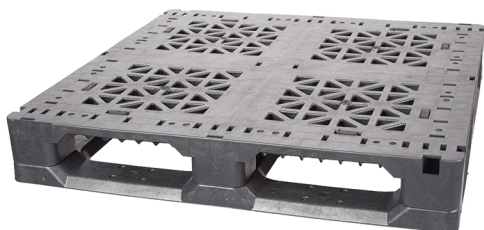
**40X32**

PRODUCT #	GS.4032.3R0	GS.4032.3R3
DESCRIPTION	(3) RUNNER / (0) ROD	(3) RUNNER / (3) ROD
LENGTH (L)	40"	40"
WIDTH (W)	32"	32"
HEIGHT (H)	5.5"	5.5"
WEIGHT	36 lbs.	40 lbs.
STATIC LOAD CAPACITY	30,000 lbs.	30,000 lbs.
DYNAMIC LOAD CAPACITY	5,000 lbs.	5,000 lbs.
RACKING CAPACITY	1,000 lbs.	2,500 lbs.
53' TRAILER QUANTITY	810	810
40' SEA CONTAINER	476	476



**37X32**

PRODUCT #	GS.3732.3R0	GS.3732.3R3
DESCRIPTION	(3) RUNNER / (0) ROD	(3) RUNNER / (3) ROD
LENGTH (L)	37"	37"
WIDTH (W)	32"	32"
HEIGHT (H)	5.5"	5.5"
WEIGHT	36 lbs.	40 lbs.
STATIC LOAD CAPACITY	30,000 lbs.	30,000 lbs.
DYNAMIC LOAD CAPACITY	5,000 lbs.	5,000 lbs.
RACKING CAPACITY	1,000 lbs.	2,500 lbs.
53' TRAILER QUANTITY	810	810
40' SEA CONTAINER	476	476



**37X37**

PRODUCT #	GS.3737.6R0	GS.3737.6R4
DESCRIPTION	(6) RUNNER / (0) ROD	(6) RUNNER / (4) ROD
LENGTH (L)	37"	37"
WIDTH (W)	37"	37"
HEIGHT (H)	5.9"	5.9"
WEIGHT	46 lbs.	50 lbs.
STATIC LOAD CAPACITY	25,000 lbs.	25,000 lbs.
DYNAMIC LOAD CAPACITY	5,000 lbs.	5,000 lbs.
RACKING CAPACITY	1,200 lbs.	2,100 lbs.
53' TRAILER QUANTITY	576	576
40' SEA CONTAINER	408	408